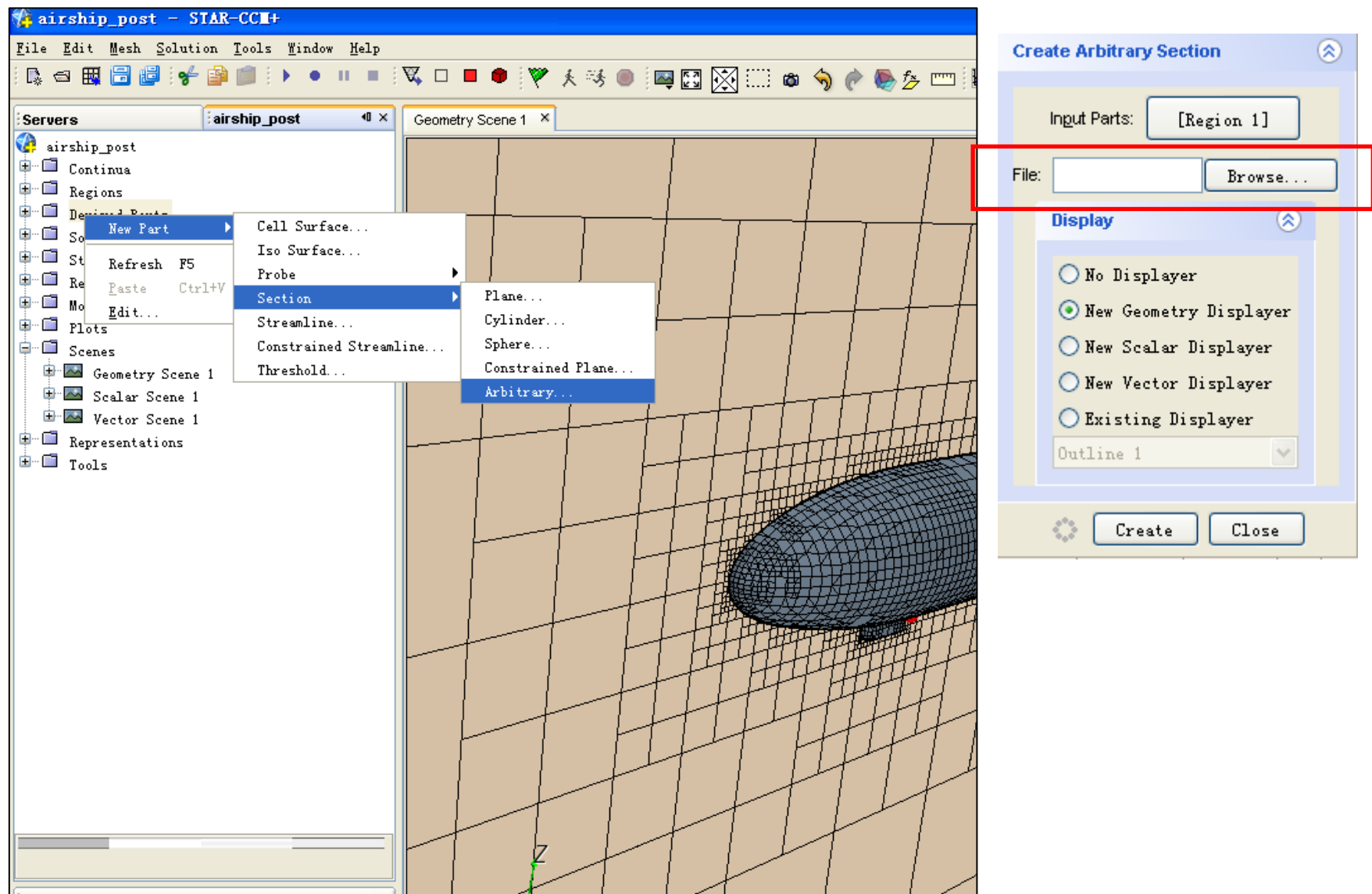
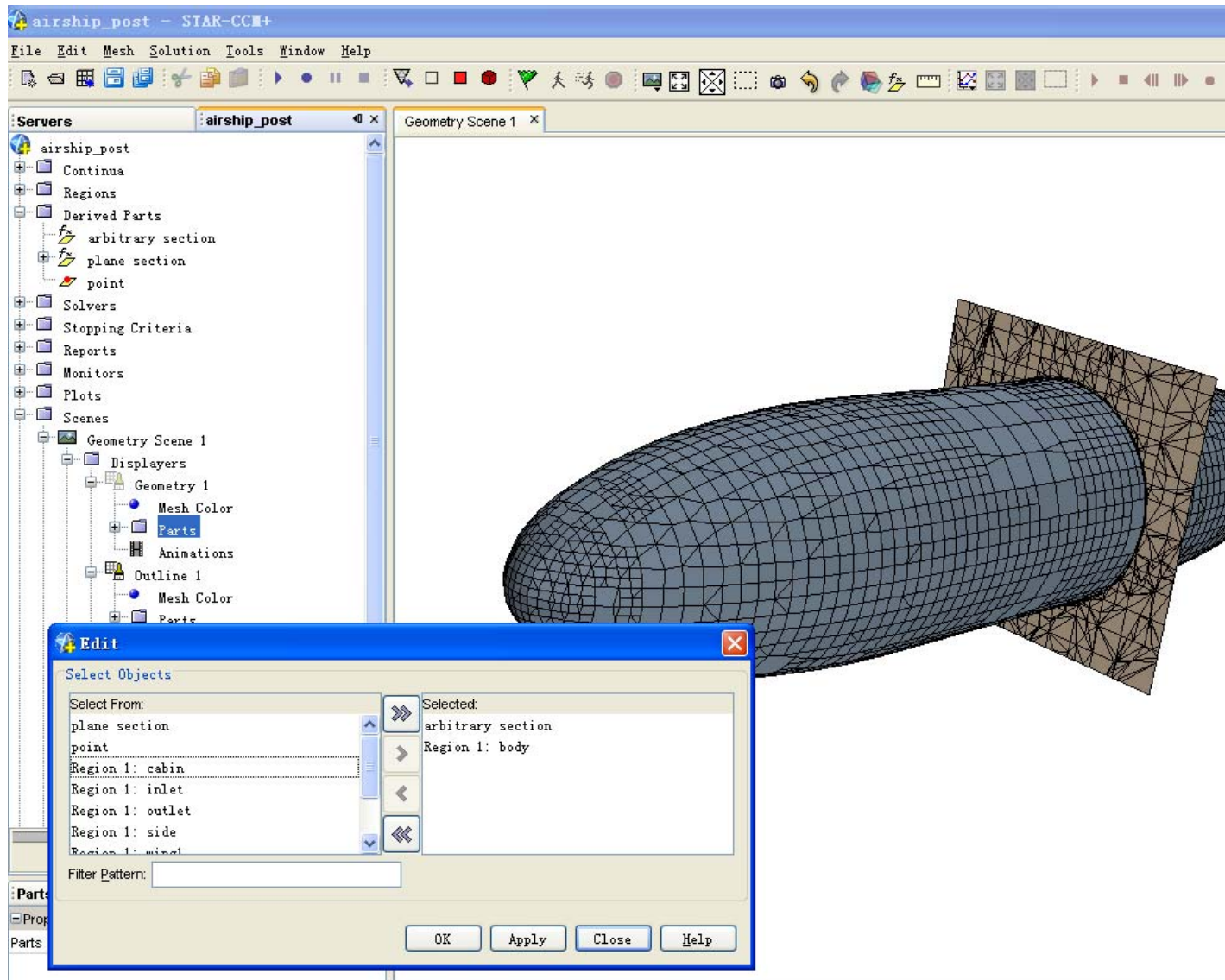


STAR-CCM+输出切面结果值 (Tools→Table)

CDAJ-China

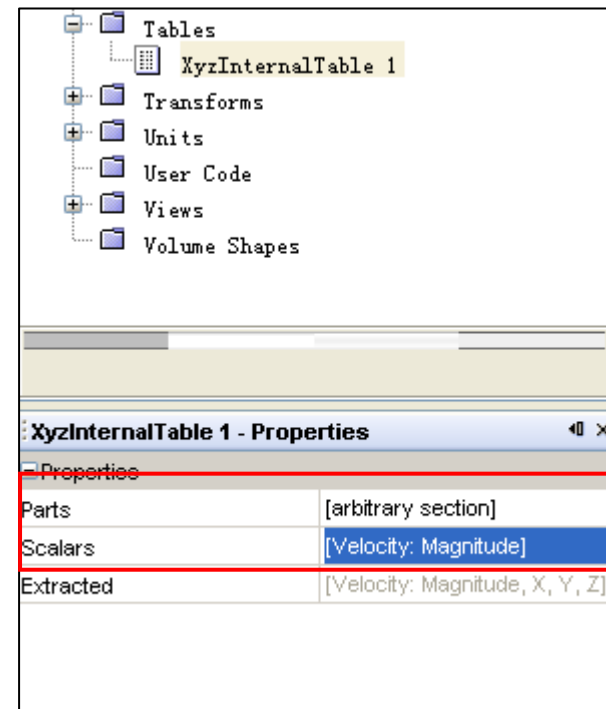
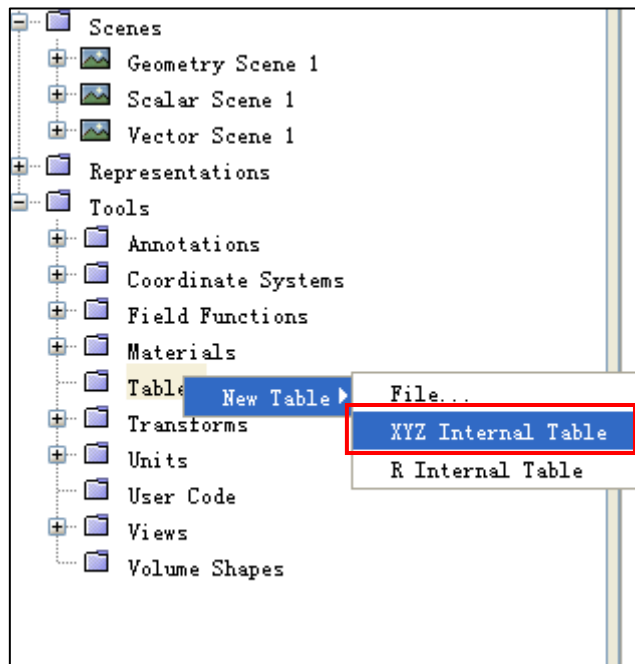


从外部读入准备好的任意切面
STL格式



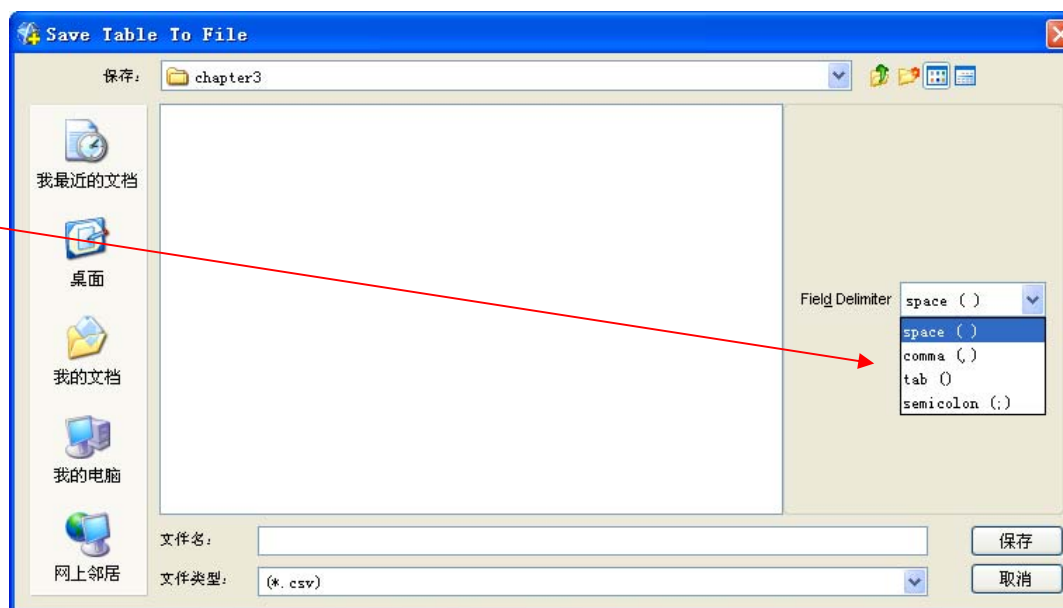
在视图中选择表面，可显示其位置及表面上的结果等

在**Scene**中加入外部导入的**arbitrary section**

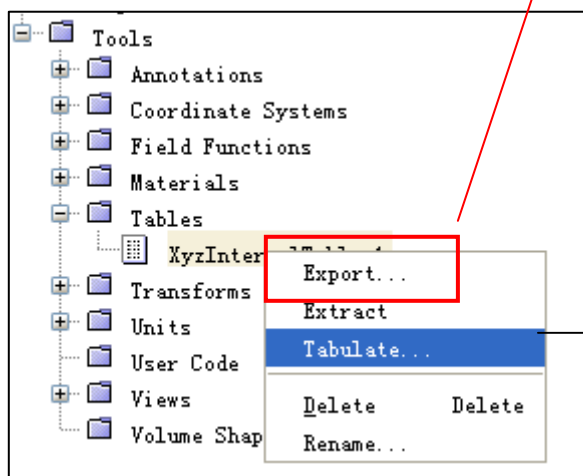


建立新**Table**，并在**Parts**中选择读入的面，在**Scalars**中选择关心的标量

结果文本输出，数据间分割
可选择用空格、逗号、
tab，和分号，以对应Excel
中的数据表格分割



使用**Tools**→**Tables**工具
导出切面数据



Tabular Data

	Velocity: Magnitude (m/s)	X	Y	Z
0	8.412851714	0	-9.99847126	0.3600105643
1	6.496598827	0	-10.00069237	-0.3136487603
2	7.285970568	0	-10.10433865	0.2852850258
3	7.318091124	0	-10.09717464	-0.3603659868
4	10.30149253	0	-10.27600002	0.1637295336
5	10.32156438	0	-11.1465826	-0.945443809
6	10.32156438	0	-10.92550278	-1.029919386
7	10.32156438	0	-10.76181316	-0.7283328176
8	10.32156438	0	-10.49008369	-0.7966309786
9	10.32156438	0	-10.45859432	-0.3753970861
10	10.32156438	0	-10.26747322	-0.255505681
11	10.38276412	0	-11.02892017	-1.473364592
12	10.47188098	0	-12.45833302	-2.77777791
13	10.47188098	0	-12.23611069	-2.722222328

Export... Close

数据格式：第一列为切面上每个单元的结果值，后面的
X、**Y**、**Z**列为相应的切面上每个单元质心的坐标值